

THE HAVEN COMMUNITY INN LIMITED
OVERVIEW OF MANAGEMENT STRUCTURE



OVERVIEW OF MANAGEMENT STRUCTURE

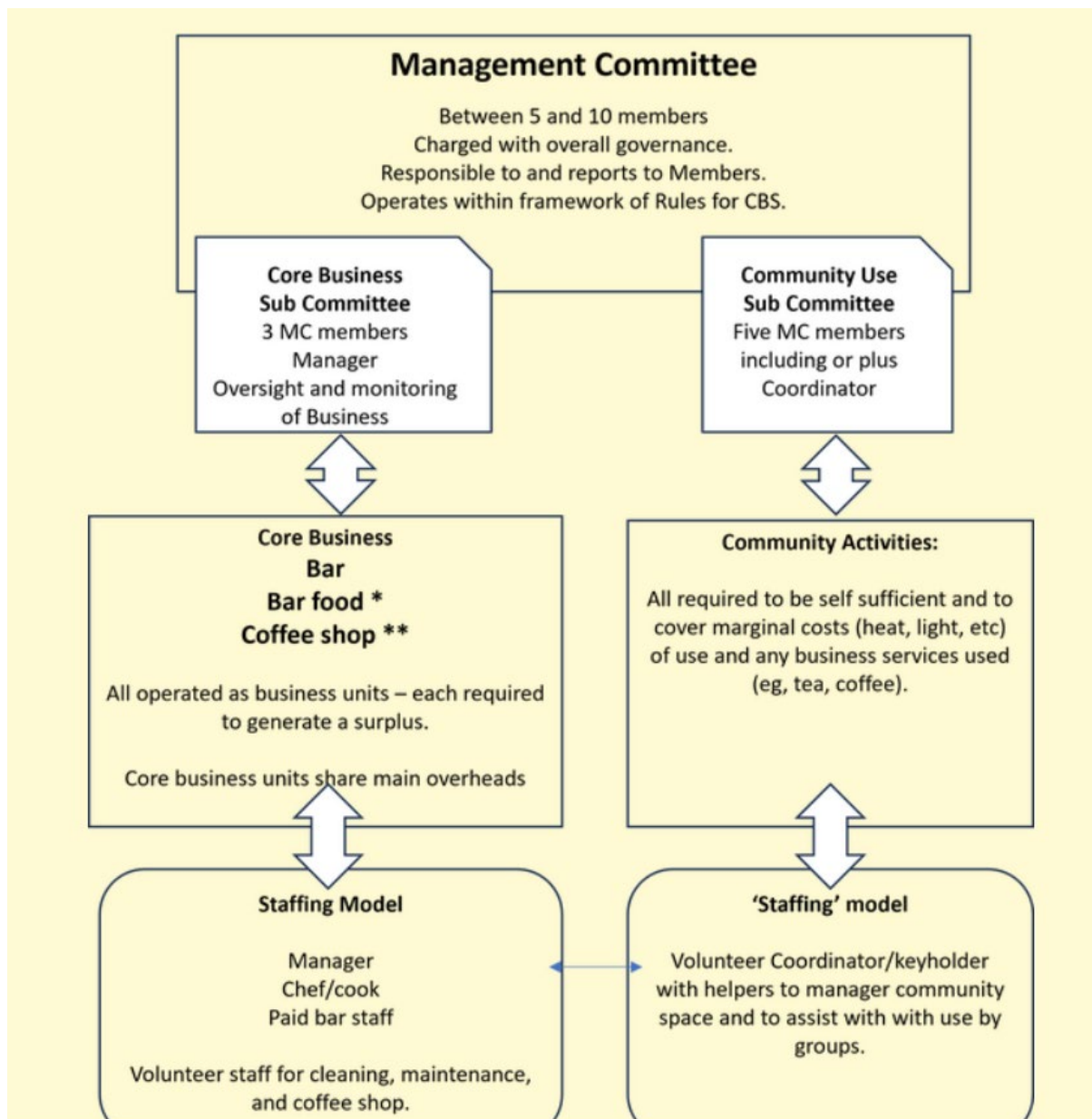
The planned approach to managing the Community Inn is based on an integrated offer but with different aspects to it. Under the terms of our approval as a Community Benefit Society, the top level of Management and governance rests with a **Management Committee**. This committee is elected by the members of the Society. The intention is that this should work through two subsets. One will focus on the Core Business (ie, largely the bar and food offer that is in place at present). The other will take an overview of activities developed as part of Community Use. The envisaged activities are based on feedback gathered through a range of community engagement exercises.

CORE ACTIVITIES

- **Core business** – based on the current business offering food and drink and, in addition, creating a community coffee shop
- **Community clubs** – hosting and supporting special interest groups such as a games group, walking group, mother and toddler group, book club, acoustic music, electronic music, local history, gardening group all defined and run by the community and bringing the community together.
- **Local business and arts** – hosting and promoting the work of local artists, showcasing local produce, generally supporting local business.
- **Events** – music, wine tasting, lectures, free-to-air sports events such as the 6 Nations
- **Services** – a point of engagement with the Council, health services, local politicians, banking/post office?
- **Education** – classes in areas such as languages, music, gardening and art. Sessions on points of interest in the local area.
- **Meetings** – space for individuals and for existing and new groups to meet

OUTLINE OF THE STRUCTURE OF THE COMMUNITY BUSINESS

Core business – based on the current business offering food and drink and, in addition, creating a community coffee shop.



* Business model option for bar food may be to contract this out

** Coffee shop run mainly by volunteers – activities need to dovetail with bar food.